



*Society for
Cross-Cultural Research*

Welcome to the 47th Annual Meeting of the Society for Cross-Cultural Research

February 21 – 24, 2018
D Hotel and Casino
Downtown Las Vegas, NV





*Society for
Cross-Cultural Research*

The Society for Cross-Cultural Research was initially planned by several founding members during the annual meeting of the American Anthropological Association in November 1971, with the first meeting convened in February 1972. Since its founding, SCCR has hosted annual conferences that provide an ideal forum for sharing and discussing new ideas, establishing and maintaining professional and personal relationships, and building collaborations with national and international colleagues.

Over the years, it has been inspiring to watch an increasing number of graduate students from various disciplines and all around the world participate and develop networks at SCCR conferences and pursue careers in fields that encourage cross-cultural research. We are hopeful that this year's conference, like all of the past conferences, will offer abundant opportunities to learn, dialogue, and network with passionate and creative scholars.

We would like to acknowledge those who assisted with the planning and organization of this year's meeting. Thank you to the University of Nevada, Las Vegas and the Department of Anthropology for their assistance and logistical support. Thank you to the Program Committee Members: Aileen Garcia, Sahitya Maiya, Madison Memmott-Elison, Irene Padasas, and Sarah Taylor.

Welcome to the 47th annual conference for the Society for Cross-Cultural Research. We are delighted to welcome you to Las Vegas, NV!

Conference Organizer:

Alyssa Crittenden (University of Nevada, Las Vegas)

Program Committee Chairs:

Peter Gray (University of Nevada, Las Vegas)

Shelly Volsche (University of Nevada, Las Vegas)

Casey Roulette (San Diego State University)

2018 SCCR Officers

Jill Brown

President

Department of Psychology, Creighton University

Alyssa Crittenden

President-Elect

Department of Anthropology, University of Nevada, Las Vegas

Brien Ashdown

Vice President

Department of Psychology, Hobart & William Smith Colleges

Bonnie Hewlett

Past President

Department of Anthropology, Washington State University

Lisa Oliver

Treasurer

Department of Counselor Education, San Jose State University

Ted Bartholomew

Secretary

Department of Educational Studies, Purdue University

Casey Roulette

Newsletter Editor

Department of Anthropology, San Diego State University

Sarah Almalki

Student Representative

Department of Human Development and Family Science, University of Missouri

Carrie Brown

Psychology Area Representative

Department of General Education - Behavioral Sciences, Western Governors University

Smita Mathur

Social Science Area Representative

Department of Early Elementary and Reading, James Madison University

Peter Peregrine

Anthropology Area Representative

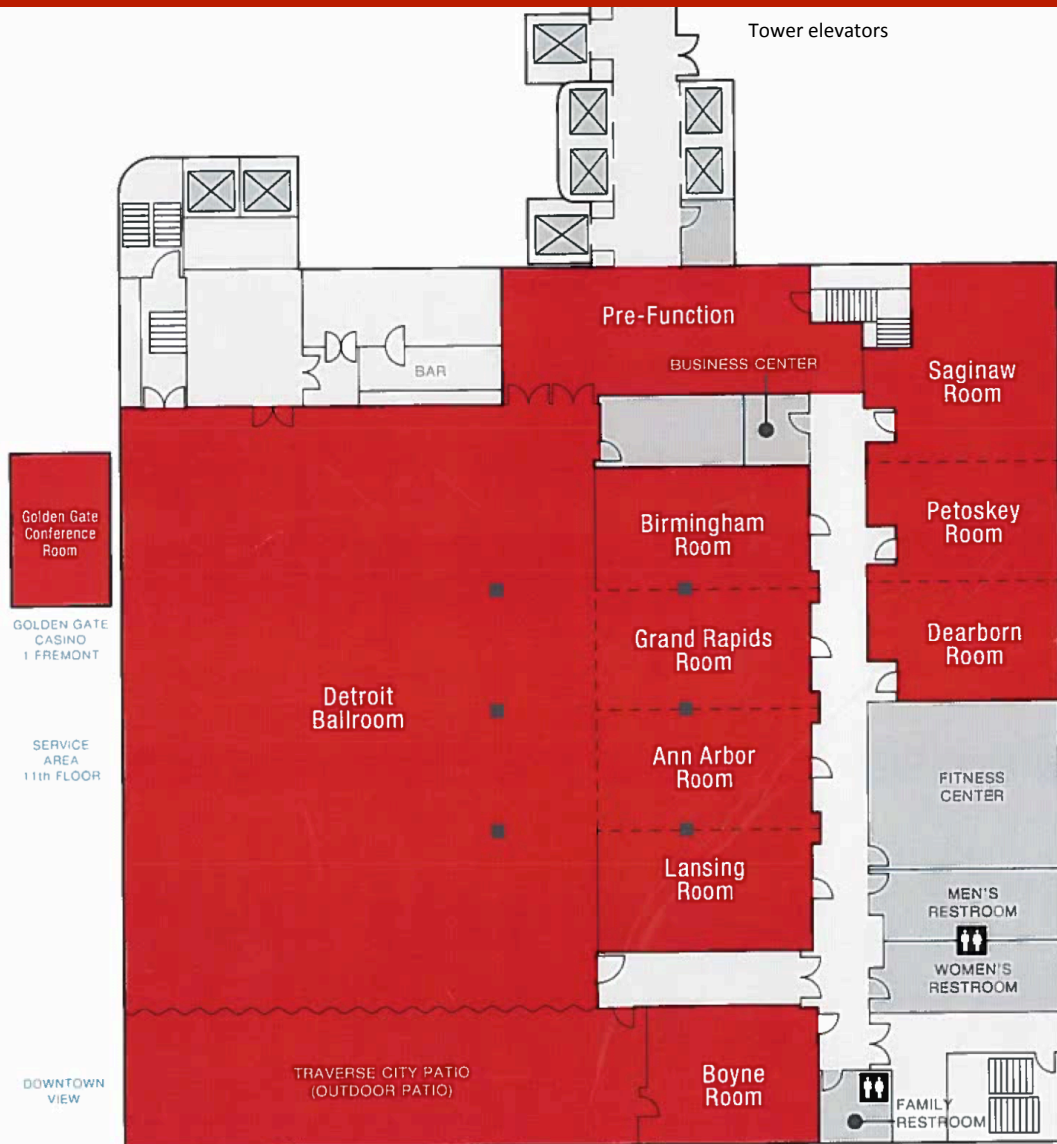
Department of Anthropology, Lawrence University

Herbert Barry

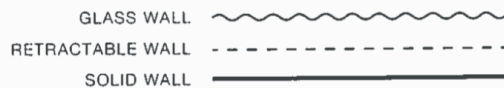
Parliamentarian and Archivist

Department of Pharmaceutical Sciences, University of Pittsburgh

D Las Vegas Meeting Space



12th Floor



2018 KEYNOTE SPEAKERS – listed below in alphabetical order by last name

Dr. Glenn Adams

Against Developmentality: Decolonial Approaches to Human Development
Thursday, February 22, 2018 at 9:00AM

Glenn Adams, PhD

Glenn Adams is a Professor in the Psychology Department at the University of Kansas and currently acting as Faculty Associate Director of the Kansas African Studies Center. He served as a Peace Corps Volunteer in Sierra Leone before completing his Ph.D. in Social Psychology at Stanford University. His graduate training included two years of field research in Ghana, which provided the empirical foundation for his research on cultural-psychological foundations of relationship. His current work builds on this foundation to investigate the colonality of knowledge in psychological science and to articulate models of human development and ways of living that promote sustainable well-being for broader humanity.



Standard constructions of development typically emphasize economic growth and modern progress as paths to human welfare. Resonating with these growth-oriented approaches to economic development, hegemonic perspectives of human development have articulated growth-oriented approaches that promote self-exploration, self-expansion, and the pursuit of personal fulfillment. Informed by cross-cultural research on relationality, my work takes decolonial critiques of growth ideology in development studies and extends them to growth-oriented ways of thinking and being (or developmentality) that inform the study and practice of human development. From this perspective, the widespread adoption of growth-oriented developmentality as global standard does not reflect the natural superiority of this model; instead, it reflects the basis of scientific imagination in neoliberal models of “modern” selfhood that are an enduring product of colonial violence. Likewise, the widespread adoption of growth-oriented developmentality in health and welfare policy regimes is not politically neutral; instead, it reproduces domination by legitimizing pursuit of narrow individual fulfillment at the expense of sustainable well-being for broader humanity. The decolonial potential of cross-cultural research is to provide an epistemic foundation from which to interrogate implications of growth ideology for human development and to illuminate sustainable models of being as a base for public health and social welfare policy.

2018 KEYNOTE SPEAKERS – listed below in alphabetical order by last name

Dr. Elizabeth Cashdan

Sex Differences in Mobility and Wayfinding: Cross-Cultural Perspectives
Thursday, February 22, 2018 at 5:00PM

Elizabeth Cashdan, PhD

Elizabeth Cashdan is a Professor of Anthropology at the University of Utah. She uses the theoretical perspectives of evolutionary ecology and evolutionary psychology to understand various aspects of human behavior. Her current research is focused on understanding sex differences in mobility, navigation, and spatial cognition, where she and her colleagues recently received additional funding to study the development of these abilities in children cross-culturally. Her overseas fieldwork has been with hunter-gatherers in Botswana (Bushmen) and Tanzania (Hadza).



Sex differences in range size and navigation are widely reported, with males traveling farther than females, being less spatially anxious, and, in many studies, navigating more effectively. We want to know why males range farther, and what this might tell us about sex differences in wayfinding and spatial confidence. Proposed evolutionary explanations have suggested that males gain mating benefits from large ranges while females incur greater fitness costs from such travel due to parenting constraints, and that spatial abilities and strategies reflects these differences. We find some support for these hypotheses, but cross-cultural data from the Tsimane, Tve, Maya, and Faroe Islands suggests that their importance varies with both mating patterns and habitat. Our work in Utah also indicates that sex differences in risk preference mediate the sex difference in mobility, which in turn affects navigational style and confidence.

2018 KEYNOTE SPEAKERS – listed below in alphabetical order by last name

Dr. Erin Hannon

Learning to Dance to Your Own Tune: The Role of Child Development in Human Musicality
Wednesday, February 21, 2018 at 5:00PM

Erin Hannon, PhD

Erin Hannon is an Associate Professor of Psychology at the University of Nevada, Las Vegas. Her research program combines her interests in cognition, culture, infant and child development, music and dance, and language. Her research examines how an individual's culture-specific listening experiences influence his or her perception of music, the similarities and differences between musical and linguistic skills as they develop and perhaps interact during infancy and childhood, how we acquire the ability to move in time with music, and how developmental milestones in music perception might be related to other social, cognitive, and linguistic abilities and behaviors.



Music is often described as universal and uniquely human, yet musical structures and behaviors exhibit tremendous cultural diversity and variability. As is that case for language, this diversity poses a challenge to human infants and children, who must acquire knowledge and skills that are specific to their local sociocultural environment without instruction and within a relatively short window of time. Rhythm is a currently a topic of great interest, given its role in some of the most ubiquitous and socially significant musical behaviors such as dancing and group music making, and also because of its relevance for language processing. In this talk I will review evidence for constraints on musical rhythm abilities, such as capacities observed across cultures or that emerge very early in child development. I will also review recent and mounting research demonstrating striking cross-cultural differences in rhythm perception and production among adults. I will highlight recent findings from our lab and others suggesting that behaviors such as dancing to music involve a host of cognitive and perceptual abilities that appear to develop quite gradually over the course of childhood. I will discuss the importance of considering childhood acquisition and enculturation processes in scientific accounts of human musicality.

2018 KEYNOTE SPEAKERS – listed below in alphabetical order by last name

Dr. Robert Hitchcock

In Search of Justice: Applying Social Science Data to Indigenous Peoples' Rights in Southern Africa
Friday, February 23, 2018 at 5:00PM

Robert Hitchcock, PhD

Robert Hitchcock is a Professor of Anthropology at the **University of New Mexico**. He is a cultural anthropologist and human ecologist who has spent much of his professional career working on issues facing current and former hunters and gatherers and agropastoral peoples, particularly in Africa. His focal areas include cross-cultural research on social and economic change, resettlement, livelihood rights, and well-being of indigenous people, minorities, and refugees. A board member of the Kalahari Peoples Fund (KPF), a non-profit organization that assists people in southern Africa, he also teaches courses in anthropology, human rights, and interdisciplinary research, provides anthropological expertise in land and resource rights cases, and conducts social and environmental impact assessments of large dams, agricultural projects, and conservation programs in Africa, the Middle East, and North and South America.



Intensive social science research work has been carried out among the Kalahari San of southern Africa since 1950. Detailed anthropological and interdisciplinary information has been obtained on the San social organization, demography, subsistence, mobility and settlement patterns, land use, nutrition, sharing and reciprocity, and belief systems, as well as on the impacts of social, economic, environmental, and political change. Development and human rights-related work began among the San in Botswana in the mid-1970s, in Namibia in the early 1980s, in South Africa in the 1990s, and in Zimbabwe in 2010. This work drew heavily on the findings of the various researchers who had worked in southern Africa. Issues addressed included rights to land, natural resources including wild animals, plants, and water, intellectual and cultural property, as well as the right to development, political participation, health and the right to Free, Prior, and informed Consent (FPIC) concerning projects and initiatives that may affect indigenous people. The discussion will focus on how social and natural science data were applied to indigenous people's rights issues in southern Africa, drawing on examples from five countries: Botswana, Lesotho, Namibia, South Africa, and Zimbabwe. An effort is made to show how important cross-cultural and diachronic data are in the development of arguments for human rights oriented policies and programs.

2018 KEYNOTE SPEAKERS – listed below in alphabetical order by last name

Dr. David Lancy

Children as Helpers: Evidence for a Universal Stage in Human Life History

Friday, February 23, 2018 at 9:00AM

David Lancy, PhD

David Lancy is Emeritus Professor of Anthropology in the Department of Sociology, Social Work, and Anthropology at **Utah State University**. His work focuses on the anthropology of childhood, in particular, the study of delayed personhood, the chore curriculum, children as a reserve labor force, children growing up in a Neontocracy, how children acquire their culture, socio-historical analyses of schooling, and the culture of street kids. He has done fieldwork with children in Liberia, Papua New Guinea, Trinidad, Sweden, Uganda, Madagascar, and in the US. He has authored several impactful books, including *Anthropology of Childhood: Cherubs, Chattel, Changelings* and *Playing on the Mother Ground*. In 2011, he was given Utah State University's Thorne award as the premier scholar.



The goal of this paper is to review and combine two, often contradictory, bodies of research. These include recent lab research with western preschoolers on the topic of pro-sociality—helping behavior, in particular. The second area of research consists of ethnographic material documenting children as helpers. The two streams of research are remarkably complementary and will be the basis for a claim that, if given the chance, all children from toddlerhood volunteer their assistance to others, especially those who're working. Furthermore, drawing largely on ethnographic cases, I will put forth a set of arguments that identify the fitness benefits to the child as well as to kin who're likely the beneficiaries of the child's helping behavior. Lastly, I will argue that by around five to six, children lose several of the attributes that identify them as "helpers" as they become "workers"—hence delimiting the helper stage.

2018 WORKSHOPS & CONVERSATION HOURS

Listed below in order of occurrence

Conversation Hour: Coming Out in Communities of Color: Challenges and Opportunities

Chairs: Gregory Canillas and Jennifer Metz

Thursday, February 22, 2018

3:15PM – 4:45PM

The conversation hour seeks to explore issues related to coming out in communities of color. LGBTQ of color often have difficulty coming out because they remain negatively affected by community and cultural standards, as well as general societal stereotypes of LGBTQ individuals. For those persons raised in religious families, coming out may offer more challenges, including reconciling sexual orientation with religious/spiritual beliefs. For this reason, many LGBT of color find it easier to remain closeted. LGBTQ individuals remain at greater risk for suicide attempts, depressive disorders, substance abuse and HIV/STDs. They are more than eight times as likely to attempt suicide; six times as likely to report high levels of clinical depression; three times as likely to use illicit/illegal drugs; and three times as likely to be at high risk for sexually transmitted diseases and HIV. The conversation hour will begin by briefly reviewing current literature on the coming out process in communities of color. Facilitators will briefly highlight identity models related to coming out, risk and protective factors, and the impact of religion, culture and community to this process. Facilitators will briefly highlight one denomination's struggle with LGBTQ inclusion and highlight possible strategies to help LGBTQ of color to develop a more healthy, integrated LGBTQ identity. Presenters will highlight opportunities and challenges experienced and will provide prompts to facilitate informal discussion with colleagues about these opportunities and challenges.

NOTE: This conversation hour will be approximately one hour in length and does not require pre-registration to attend.

Conversation Hour: Exploring Extension: Non-Traditional Careers in Academia

Chairs: Car Mun Kok, Deepa Srivastava, and Maria de Guzman

Friday, February 23, 2018

10:15AM – 11:45AM

Cooperative Extension has been around for over a 100 years but is still often times called “the best kept secret.” The Cooperative Extension System (CES) serves to translate research into practical and actionable knowledge to communities to improve the lives of people. The integration of research, extension and outreach, and university and public service is vital to this system. CES is represented in all land-grant universities around the country and is a viable but often little known career path. In fact, there are numerous tenure- and non-tenure academic positions at universities and county offices that are available for those who are interested in pursuing careers in applied research. In this conversation hour, we will provide an overview of the history and purpose of Cooperative Extension, share the different models of Extension within different university systems, and explore the different academic jobs within Cooperative Extension.

NOTE: This conversation hour will be approximately one hour in length and does not require pre-registration to attend.

2018 WORKSHOPS & CONVERSATION HOURS

Listed below in order of occurrence

Conversation Hour: Women and Cross-Cultural Research – Where We’ve Been and Where We Are

Chairs: Carrie Brown and Brien Ashdown

Friday, February 23, 2018

3:15PM – 4:45PM

In this conversation hour, we bring together six women who are prominent cross-cultural researchers and leaders of SCCR. This conversation hour will provide a space for an in-depth and informal dialogue with the audience. As co-chairs, we will pose questions to the women, focusing on their research and the challenges they have faced as women in the field, as well as their triumphs. The audience will also have the opportunity to ask the panel questions about their experiences and to seek advice for current issues.

Participants:

Judith Gibbons, Saint Louis University

Debbie Best, Wake Forest University

Alice Schlegel, University of Arizona

Hemalatha Ganapathy-Coleman, University of Toronto Mississauga

Jill Brown, Creighton University

Bonnie Hewlett, Washington State University

NOTE: This conversation hour will be approximately one hour in length and does not require pre-registration to attend.

Workshop: Exploring Cultural Variation Using eHRAF World Cultures

Presenter: Carol Ember, President, Human Relations Area Files

Saturday, February 24, 2018

10:15AM – 11:45AM

eHRAF World Cultures was designed to facilitate cross-cultural comparisons by providing finely subject-indexed ethnographic information about the cultures of the world. With over 300 cultures included, you can readily compare similar topics across cultures. In this workshop, you will learn the fundamentals of using eHRAF World Cultures in the context of coding a few variables about child socialization. Specifically, we will examine variation in the degree to which parents use corporal punishment. Pointers will be given for learning more about designing and conducting a cross-cultural study.

NOTE: This workshop will be 1.5 hours long and does not require pre-registration to attend.

EVENTS AT A GLANCE

WEDNESDAY: February 21, 2018

TIME	EVENT	ROOM
3:00PM – 5:00PM	Registration	Pre-Function Room
5:00PM – 6:00PM	Opening Keynote Address Dr. Erin Hannon	Detroit Ballroom
6:00PM – 7:30PM	Welcome Reception	Traverse City Patio

THURSDAY: February 22, 2018

TIME	EVENT	ROOM
9:00AM – 10:00AM	Keynote Address Dr. Glenn Adams	Detroit Ballroom
9:00AM – 5:00PM	Book Exhibit	Grand Rapids
10:15AM – 4:45PM	All conference sessions	
5:00PM – 6:00PM	Keynote Address Dr. Elizabeth Cashdan	Detroit Ballroom
6:00PM – 7:00PM	Reception	Traverse City Patio

FRIDAY: February 23, 2018

TIME	EVENT	ROOM
9:00AM – 10:00AM	Keynote Address Dr. David Lancy	Detroit Ballroom
9:00AM – 5:00PM	Book Exhibit	Grand Rapids
10:15AM – 4:45PM	All conference sessions	
12:00PM – 1:30PM	Graduate Student Social	Saginaw
3:15PM – 4:45PM	Poster Session	Detroit Ballroom
5:00PM – 6:00PM	Keynote Address Dr. Robert Hitchcock	Detroit Ballroom
6:00 – 7:00 PM	Reception	Traverse City Patio
7:00PM – 9:00PM	Banquet Dinner	Detroit Ballroom

SATURDAY: February 24, 2018

TIME	EVENT	ROOM
9:00AM – 5:00PM	APA Div 52 Midwinter Board Meeting	Birmingham
10:15AM – 12:30PM	All conference sessions	
12:00PM – 1:00PM	SCCR General Membership Meeting	Saginaw

CONFERENCE SCHEDULE
WEDNESDAY, FEBRUARY 21, 2018

TIME	EVENT	ROOM
3:00PM – 5:00PM	Registration	Pre-Function
5:00PM – 6:00PM	Opening Keynote Address <i>Learning to dance to your own tune: The role of child development in human musicality</i> Dr. Erin Hannon Introduction by Dr. Peter Gray	Detroit Ballroom
6:00PM – 7:30PM	Welcome Reception Hosted happy hour and appetizers (Open Bar – wine and beer)	Traverse City Patio (Detroit Ballroom)

CONFERENCE SCHEDULE
THURSDAY, FEBRUARY 22, 2018

TIME	EVENT	ROOM
8:00AM – 8:45AM	SCCR Board Meeting	Lansing
8:00AM – 3:00PM	Registration	Pre-Function
9:00AM – 5:00PM	Book Exhibit	Grand Rapids

9:00AM – 10:00AM	Keynote Address	Detroit Ballroom
	<i>Against Developmentality: Decolonial Approaches to Human Development</i>	
	Dr. Glenn Adams	
	Introduction by Dr. Jill Brown	

SESSION I: 10:15AM – 11:45AM

10:15AM – 11:45AM	Organized Symposium	Saginaw
	How Culture Informs Development: Thinking, Feeling, and the Future	
	Chairs: Katelyn E. Poelker and Judith L. Gibbons	
	<i>(1) Deciding Who You Sleep With: Culture, Developmental Timing and the Socialization of Implicit Cultural Values in Sleeping Arrangements in the U.S. and Dominican Republic</i>	
	Authors: Jill Brown and Olivia Kilgarin	
	<i>(2) Prospective Memory in Preschoolers: Parental Expectations versus Actual Abilities</i>	
	Authors: Nicole B. Capobianco and Deborah L. Best	
	<i>(3) What do Guatemalan Teenagers Want for their Futures? A Qualitative Study of Drawings of Future Selves</i>	
	Authors: Brien K. Ashdown, Dana Janes, and Samuel E. Draznin-Nagy	
	<i>(4) Feeling Grateful and Hassled: Within-Country Diversity in Guatemalan Adolescents</i>	
	Authors: Katelyn E. Poelker, Judith L. Gibbons, Natalia Marsicovetere Fanjul, Alyssa Arens, Colleen A. Maxwell, and Jim Dolan	
	<i>(5) Discussion</i>	
	Led by Deborah L. Best	

CONFERENCE SCHEDULE
THURSDAY, FEBRUARY 22, 2018

10:15AM – 11:45AM

Organized Symposium

Petoskey

Violence in the Past: Cross Cultural Perspectives

Chair: Debra L. Martin

(1) *Ritual Violence in Small Scale Societies in the Past: Cross-Cultural Survey*

Author: Debra L. Martin

(2) *Blunt Force: The Interdisciplinary Analysis of War Clubs in Hunter-Gatherer Societies*

Author: Joseph B. Curran

(3) *Finding Mercy in Murder: An Exploration of the Act and Agency of Mercy Killing, Euthanasia, and Assisted Suicide Among Past Human Societies*

Author: Diana S. Simpson

(4) *High Risk Endeavors: Mixed Subsistence Strategies and Patterns of Accidental Trauma and Interpersonal Violence on Black Mesa (AD 900-1150)*

Author: Clair Ralston

(5) Discussion

Led by Anna Osterholtz

10:15AM – 11:45AM

Paper Session

Dearborn

Evolutionary and Cultural Perspectives on Childhood

Chair: Sheina Lew-Levy

(1) *Acute Salivary Steroid Hormone Responses in Juvenile Boys and Girls to Non-Physical Team Competition*

Authors: Timothy S. McHale, Peter B. Gray, Ka-chun Chan, David T. Zava, and Wai-chi Chee

(2) *Foraging Motivations Among Hadza Juveniles*

Authors: Trevor R. Pollom, Ibrahim A. Mabulla, and Alyssa N. Crittenden

(3) *Egalitarian Social Learning in Two Hunter-Gatherer Societies: A Social Network Analysis of Learning to Forage Among the Hadza of Tanzania and the Mbendjele of Congo*

Authors: Sheina Lew-Levy, Stephen Kissler, Adam Boyette, Alyssa Crittenden, Barry Hewlett, and Michael Lamb

(4) *India Dogs: An Initial Investigation of the Attitudes of Urban, Indian Youth*

CONFERENCE SCHEDULE
THURSDAY, FEBRUARY 22, 2018

	Authors: Shelly Volsche, Miriam Mohan, Lexy Silva, Madhavi Rangaswamy, and Peter Gray	
	(5) <i>Nepalese Child Labourers' Life-contexts, Cognitive Skills and Well-being</i>	
10:15AM – 11:45AM	Author: Esa Alaraudanjoki	
	Paper Session	Lansing
	Cross-Cultural Perspectives on Education and Instruction	
	Chair: Mary Beth Leidman	
	(1) <i>Study Abroad Intent: Self-Selection Amongst First-Year Japanese Students</i>	
	Author: Andrew Nowlan	
	(2) <i>International Studies in the Community College: Preparing the Next Generation</i>	
	Author: Janice Hartgrove-Freile	
	(3) <i>Creativity, Collaboration and Critical Thinking: Utilizing Multi-Faceted Simulations as a Primary Mode of Instruction</i>	
	Authors: Mary Beth Leidman, Nancy Ali, Thomas J. Brown, and Laura Wilson	
	(4) <i>What Universities Can Do To Address Cyberbullying: A Qualitative Analysis of College Student Minorities</i>	
	Authors: Timothy Oblad, Maike Holleck, Patricia Luera, and Sarah Garcia	
	(5) <i>Cyber Bullying: Prevalence, Consequences, and its Impact on Psychological Wellbeing Among University Students at Quetta Balochistan, Pakistan</i>	
	Author: Muhammad Azam Tahir	
	(6) <i>Tracking or Trailing? The Impact of Every Child Succeeds Act on Military Families</i>	
	Author: Heather Rae Espinoza	

LUNCH BREAK 12:00PM – 1:30PM

SESSION II: 1:30PM – 3:00PM

1:30PM – 3:00PM	Organized Symposium	Saginaw
	Caregiving, parental notions, and child outcomes: Understanding families in context (Part 1: Culture comparative studies)	

CONFERENCE SCHEDULE
THURSDAY, FEBRUARY 22, 2018

Chair: Aileen Garcia

(1) *Feeding Practices of Preschools in Colombia and the USA: A Cross-cultural Multiple Case Study*

Author: Elsa Lucía Escalante Barrios

(2) *Relations between Positive Parenting, Prosocial Behavior, and Internalizing Behavior: A Cross-Cultural Analysis*

Authors: Madison Memmott-Elison and Gustavo Carlo

(3) *Children's Use, and Parent-child Co-use, of Mobile Technology in the US and Turkey: A Mixed Methods Study involving Preschoolers and their Parents from Low-Income Households*

Author: Jan Esteraich

(4) *Parental Notions and Expectations around Academics: Contrasting Ethnotheories Among Chinese and Filipino American Migrants*

Authors: Dan Wang, Maria Rosario T. de Guzman, Yao Yao, Yan Xia, Soo-Young Hong, and Evan Choi

(5) *Discussion*

Led by Maria Rosario T. de Guzman

1:30PM – 3:00PM

Paper Session

Petoskey

Criminal Justice, Corporal Punishment, and Legal Systems

Chair: Ozioma Aloziem

(1) *Cultural Influences on Criminal Behavior: An East vs. West Perspective*

Authors: Linus Chan and Carol Y. Yoder

(2) *Racial Demographics of Justice-Involved Coloradans With a History of TBI*

Authors: Ozy Aloziem, Judy L. Dettmer, Ronen Friedman, Kimberly Gorgens, and Amber G. Graf

(3) *Normative Concepts: The Meaning in Cross-Cultural Perspective*

Author: Marek Jakubiek

(4) *Corporal Punishment and Disciplinary Control in Primary Schools of Nigeria: A Case Study of Calabar South Local Government Area of Cross River State, Nigeria*

Authors: Godfrey E. Ukapbio and Emmanuel C. Nyong

1:30PM – 3:00PM

Paper Session

Dearborn

Cross-Cultural Perspectives on Mental Health

Chair: Shalini Choudhary

CONFERENCE SCHEDULE
THURSDAY, FEBRUARY 22, 2018

(1) *Helping or Exclusion? The Case of Intimate Partner Violence Female Survivors with Mental Health Problems*
Author: Chu-Li Liu

(2) The impact of ethnicity and gender on disordered eating attitudes, BMI and measures of psychological distress
Authors: Jeanne L. Edman, Susan Watson, and David Patron

(3) *Cross Cultural Perspectives of Compassion for Persons with Dementia*
Author: Michael Ego

(4) *Cultural Adaptation of Psychometric Tests for Identifying Borderline Personality Disorder Patients in India*
Author: Shalini Choudhary

(5) *"How do You Need Us to Help?": Practitioners' Experiences in Northern Namibia*
Author: Theodore Bartholomew

(6) *Manifestation of Borderline Personality Disorder in North India*
Author: Shalini Choudhary

1:30PM – 3:00PM

Paper Session

Lansing

Gender Roles, Romance, and Sexual Identity

Chair: Shelly Volsche

(1) *Wanting it Both Ways: Kashmiri Tourism-related Shopkeepers Views on Women*
Author: Steve Winterberg

(2) *Parents' Attitude and Actions on Adolescent Romantic Relationships in Contemporary China*
Author: Mengxue Qin

(3) *Reimagining the Village: The Importance of Extended and Fictive Kin in the Childfree Community*
Author: Shelly Volsche

(4) *Coming Out as Gay in Egypt: A Cultural Perspective*
Author: Hani Henry

(5) *Relative Importance of Family and Peer Approval for LGBTQ individuals*
Authors: Taylor Bickel and Jill Brown

CONFERENCE SCHEDULE
THURSDAY, FEBRUARY 22, 2018

(6) *Pubic Hair Removal Practices in Cross-Cultural Perspective*
Authors: Lyndsey K. Craig and Peter B. Gray

SESSION III: 3:15PM – 4:45PM

3:15PM – 4:45PM

Organized Symposium

Saginaw

**Caregiving, parental notions, and child outcomes:
Understanding families in context (Part 2: Parenting and child
development in cultural context)**

Chair: Maria Rosario T. de Guzman

(1) *Parental Involvement Among Low-income Filipinos: A
Phenomenological Inquiry*

Authors: Aileen Garcia and Maria Rosario de Guzman

(2) *Racial identity and Religiosity as Mediators of Associations
between Family Ethnic-Racial Socialization and Prosocial Behaviors in
Black Adolescents*

Authors: Sahitya Maiya, Gustavo Carlo, and Madison Memmott-
Elison

(3) *Parenting from a Distance: Philippine Yayas (A Follow-Up)*

Authors: Irene Padasas, Maria Rosario T. de Guzman, and Aileen
Garcia

(4) *Discussion*

Led by Aileen Garcia

3:15PM – 4:45PM

Panel Discussion

Petoskey

Celebrating the Life and Work of Robert J. Kleiner

Co-Chairs: Paul Y. L. Ngo and Tom Sørensen

(1) *Robert Kleiner's Background and his Connection to the Society for
Cross-Cultural Research (SCCR)*

Author: Paul Y. L. Ngo

(2) *Bob Kleiner and the Legacy of Kurt Lewin*

Author: Ana Marjanovic-Shane

(3) *Robert (Bob) Kleiner, The Norwegian Connection: Friendship and
Research Collaboration*

Authors: Tom Sørensen and Andreas Sørensen

CONFERENCE SCHEDULE
THURSDAY, FEBRUARY 22, 2018

(4) Investigating How Age Mediates the Effects of Community on Mental Health: Robert J. Kleiner's Legacy

Authors: Paul Y. L. Ngo, Tom Sørensen, and Andreas Sørensen

(5) Local Community Promotion – Resources and Conflicts - The Lofoten Case

Authors: Tom Sørensen, Andreas P. Sørensen, and Paul Y. L. Ngo

(6) Discussion

Led by Judith L. Gibbons

3:15PM – 4:45PM

Conversation Hour

Dearborn

Coming Out in Communities of Color: Challenges and Opportunities

Chairs: Gregory Canillas and Jennifer Metz

3:15PM – 4:45PM

Organized Symposium

Lansing

Natural Hazards and Cultural Transformations II

Chair: Peter Peregrine

(1) Political Participation Mediates Post-Disaster Conflict in Ancient Societies

Author: Peter Peregrine

(2) A Cross-Cultural Examination of Leadership Strategies in Disaster Impacted Societies

Author: Eric Jones

(3) Resource Uncertainty, Subsistence, and Subsistence Diversification

Authors: Carol R. Ember, Erik Ringen, and Jack Dunnington

5:00PM – 6:00PM

Keynote Address

Detroit Ballroom

Sex Differences in Mobility and Wayfinding: Cross-Cultural Perspectives

Dr. Elizabeth Cashdan

Introduction by Dr. Alyssa Crittenden

6:00PM – 7:00PM

Cocktail reception
(Cash bar)

Traverse City Patio (Detroit Ballroom)

CONFERENCE SCHEDULE
FRIDAY, FEBRUARY 23, 2018

TIME	EVENT	ROOM
8:00AM – 8:45AM	SCCR Board Meeting	Lansing
9:00AM – 5:00PM	Registration	Pre-Function
9:00AM – 5:00PM	Book Exhibit	Grand Rapids
<hr/>		
9:00AM – 10:00AM	<p>Keynote Address</p> <p><i>Children as Helpers: Evidence for a Universal Stage in Human Life History</i> Dr. David Lancy</p> <p>Introduction by Dr. Adam Boyette</p>	Detroit Ballroom
<hr/>		
SESSION I: 10:15AM – 11:45AM		
10:15AM – 11:45AM	<p>Organized Symposium</p> <p>Gender Socialization in Context: Cross-Cultural Perspectives on the Empowerment of Women and Girls Chairs: Angelica Puzio and Deborah L. Best</p> <p>(1) <i>The Socialization of the Adolescent Voice: Self-Silencing as an Expression of Culture and Context</i> Authors: Angelica Puzio and Deborah L. Best</p> <p>(2) <i>“Look like girls, but act like boys”: Norms of Masculinity and Psychosocial Wellbeing Among Adolescent Girls in the U.S. and China</i> Authors: Rui Yang, Onnie Rogers, Niobe Way, and Anna Bennet</p> <p>(3) <i>Having the Number of Children They Want: Empowerment of Latin American Women</i> Authors: Katelyn E. Poelker, Judith L. Gibbons, and Sydney R. Hudock</p> <p>(4) <i>An Ideal Man and an Ideal Woman Through the Eyes of Estonian Adolescent Boys and Girls</i> Authors: Tiia Tulviste and Anni Tamm</p> <p>(5) <i>Discussion</i> Led by Judith Gibbons</p>	Saginaw
10:15AM – 11:45AM	<p>Organized Symposium</p> <p>Qualitative Explorations of Well-Being, Health Equity, and Mental Health Across Cultures</p>	Petoskey

CONFERENCE SCHEDULE
FRIDAY, FEBRUARY 23, 2018

Chair: Theodore Bartholomew

(1) *Southeast Asian Refugees' Civic Engagement, Generativity, and Well-Being*

Authors: Danielle A. Augustine and Denise C. Lewis

(2) *Community-Based Participatory Research: The Importance of Community Involvement in Addressing Health Disparities Among Southeast Asian Immigrants*

Authors: Monysakada Phal, Denise C. Lewis, and Desiree M. Seponski

(3) *Consideration of Deferred Action for Childhood Arrivals (DACA) from Asia: Fear, Uncertainty, and Invisibility*

Authors: Yasemin Cava Tadik, and Denise C. Lewis

(4) *Omunanamwengu (the Mad One): A Multiple Case Study of Living with Madness Among the Northern Namibian Aawambo*

Author: Theodore T. Bartholomew

10:15AM – 11:45AM

Paper Session

Dearborn

Ecology and Evolution: Cross-Cultural Perspectives on Substance Use, Pathogen Avoidance, and Infant Health

Chair: Casey Roulette

(1) *Cultural Norms of Substance Use in Association With Evolutionary Theories of Development: A Qualitative Investigation Among the Jenu Kurubas of South India*

Authors: Caitlyn D. Placek, Kavitha Ravi, Rashmi P., Poornima Jayakrishna, and Purnima Madhivanan

(2) *Patterns of Cannabis Use Among Congo Basin Foragers*

Authors: Casey J. Roulette and Barry S. Hewlett

(3) *Reconciling the Relationships Between Risk, Impulsivity, and Pathogen-Avoidance Within Life history Theory: An Exploration Across Tanzanian Pastoralists, Ethiopian Farmers, and Indian Wage-Laborers*

Authors: Mark Caudell, Caitlyn D. Placek, and Robert Quinlan

(4) *Household Composition and the Infant Gastrointestinal Microbiome: A Cross- Cultural Study*

Authors: Avery A. Lane, Edward H. Hagen, Kimberly A. Lackey, Janet E. Williams, Mark A. McGuire, Michelle K. McGuire, and Courtney L. Meehan

(5) *Maternal Breastfeeding Patterns and Infant Colostrum Consumption Among the Hadza Foragers*

Authors: Kristen N. Herlosky and Alyssa N. Crittenden

CONFERENCE SCHEDULE
FRIDAY, FEBRUARY 23, 2018

10:15AM – 11:45AM	Conversation Hour	Lansing
	Exploring Extension: Non-Traditional Careers in Academia Chairs: Car Mun Kok, Deepa Srivastava, and Maria de Guzman	
12:00PM – 1:30PM	Graduate Student Social Lunch provided Pre-registration required	Lansing

LUNCH BREAK 12:00PM – 1:30PM

SESSION II: 1:30PM – 3:00PM

1:30PM – 3:00PM	Organized Symposium	Saginaw
	Hunter-Gatherers in the 21st Century – Economic and Social Dimensions of Foraging in a Changing Landscape Chairs: Alyssa N. Crittenden and Karen L. Kramer	
	(1) <i>Why Savanna Pumé Foragers Retain a Hunting and Gathering Way of Life</i> Authors: Karen L. Kramer and Russell D. Greaves	
	(2) <i>Sustaining a Hunter-Gatherer Economy in the Twenty-First Century Requires Active Habitat Modification: Insights from Western Australia</i> Authors: Brian F. Coddling, Rebecca Bliege Bird, and Douglas W. Bird	
	(3) <i>Hadza Health in Transition: The Beginning of a Mixed Subsistence Economy and Its Impacts</i> Author: Alyssa N. Crittenden	
	(4) <i>Variation on Foraging Contributions to Livelihoods Among San Populations in Namibia, Botswana, and Zimbabwe</i> Author: Robert K. Hitchcock	
	(5) <i>Discussion</i> Led by Barry S. Hewlett	
1:30PM – 3:00PM	Paper Session	Petoskey
	Cross-Cultural Variation in Cognition: Categorization, Intrinsic Motivation, and False Memory Chair: Jill Brown	
	(1) <i>"But What About the Rabbit?": Cognitive Differences in Categorization Within and Across Culture and SES</i>	

CONFERENCE SCHEDULE
FRIDAY, FEBRUARY 23, 2018

Authors: Jill Brown, Cesar Torres, and Hōkūle'a Foster, and Margo Scott

(2) *Within-Group Predictors of Indian and European American Undergraduates' Intrinsic Motivation*

Authors: Sarah Pierotti, Duane Rudy, Kennon Sheldon, and Shanmukh Kamble

(3) *How the Cross-Cultural Approach Explains the Universality of False Memory Phenomenon? Results from American, China, Polish and Turkish Samples*

Author: Patrycja Maciaszek

(4) *Value Hierarchies Within and Across Cultures: A Comparative Examination of 25 Value Theories*

Author: Gerard Saucier

1:30PM – 3:00PM

Paper Session

Dearborn

Parenting: Impacts of Stress, Outcomes of Parental Rejection, and Cross-Cultural Perspectives on Paternal Investment

Chairs: Sumbleen Ali and Ronald Rohner

(1) *Parental Stress: Its Impact on Psychological Wellbeing Among the Parents of Children With and Without Disabilities at Quetta Balochistan, Pakistan*

Author: Muhammad Azam Tahir

(2) *A Systematic Review of Meta-Analyses of Research on Interpersonal Acceptance-rejection Theory: Constructs and Measures*

Authors: Abdul Khaleque and Sumbleen Ali

(3) *Socioeconomic Predictors of Fathers' Perception of Children's Academic Behaviors in Squatter Families*

Author: Ziarat Hossain

(4) *Patterns and Predictors of Depressive Symptoms among Jamaican Fathers of Newborns*

Authors: Peter B. Gray, Charlene Coore-Desai, Sydonnie Pellington, Twana Dinall, Jody Reece, Andre Bateman, and Maureen Samms-Vaughan

(5) *Teaching as Paternal Investment: Fatherhood at the Information Cooperation-Reproductive Cooperation Nexus*

Authors: Adam H. Boyette, Sheina Lew-Levy, Mallika Sarma, Miegakanda Valchy, and Lee T. Gettler

CONFERENCE SCHEDULE
FRIDAY, FEBRUARY 23, 2018

(6) *They Love Me Not: A Meta-Analytic Review of Pancultural Relations Between Perceived Parental Undifferentiated Rejection And Offspring's Psychological Maladjustment*
Author: Sumbleen Ali, Nazma Khatun, Abdul Khaleque, and Ronald P. Rohner

1:30PM – 3:00PM

Paper Session

Lansing

Migration, Nationality, and Identity - Session One

Chair: Olena Nesteruk

(1) *Self in a Cultural Context: Examining the Tripartite Self in the City of New Delhi*
Author: Saif R. Farooqi

(2) *Coping with Transnational Deaths and Bereavement: The Influence of Migratory Loss and Anticipatory Grief*
Author: Olena Nesteruk

(3) *Variation of Human Values and Modernization: Preliminary Results*
Author: Andrey Korotayev

(4) *Favorable National Conditions Lengthen Lives of Females more than Males*
Author: Herbert Barry III

SESSION III: 3:15PM – 4:45PM

3:15PM – 4:45PM

Poster Session

Detroit Ballroom

(1) *The Impact of Historical Trauma on the Help-Seeking Behavior of African Americans*
Authors: Gregory Canillas, Mallory Behar, and Christeen Sonaly Silva

(2) *Sex, Love & Marriage: Treatment Issues with LGBTQ Clients*
Authors: Gregory Canillas, Courtney Crisp, and Melissa Duncan

(3) *The Impact of Cultural Beliefs and Stereotypes on Black Women's Mental Health*
Authors: Melissa Duncan and Gregory Canillas

(4) *Iranian-Americans' Interest in STEM: The Roles of Cultural Orientation and Academic Self Efficacy*
Authors: Sahra Kaboli-Nejad and Carey S. Ryan

(5) *Organizational and Individual Variables in the University Workplace Experience of Women and Men in Poland*

CONFERENCE SCHEDULE
FRIDAY, FEBRUARY 23, 2018

Authors: Rosemary Krawczyk and Jon Kalinowski

(6) *Factors affecting Variation in Forager and Forager-Horticulturalists Children's Activity Budgets: A Cross-Cultural Analysis*

Authors: Sheina Lew-Levy, Rachel Reckin, Stephen Kissler, Adam Boyette, Alyssa N. Crittenden, Jeremy Koster, Koji Sonoda, Jonathan Stieglitz, Noa Lavi, and Kate Ellis-Davies

(7) *Effects of Emotional Stability and Family Quality of Life on Well-Being of College Students*

Authors: Abel Gitimu Waithaka and Priscilla N. Gitimu

(8) *Socialization Goals and Parenting Beliefs: A Study of Rwandan Infant Caregivers*

Author: Joyce Yip Green

(9) *Does contingency in teaching matter for three- and four-year-olds' learning math and spatial skills?*

Authors: Joohyun (Julie) Kim, Daniel Suh, Woosik Jung, and Catherine Tamis-LeMonda

3:15PM – 4:45PM

Paper Session

Saginaw

Cultural and Ecological Influences on Child Development

Chair: Courtney L. Meehan

(1) *Coordinated Joint Engagement in 1-year-olds Sampled from Different Species and Ecological-cultural Settings*

Authors: Kim Bard, Lauren Butler, Kirsty Ross, Heidi Keller, Barry Hewlett, Bill Walnauer, Takeshi Kishimoto, Jolie Anderson, Sarah T. Boysen, and Tetsuro Matsuzawa

(2) *Early experiences: A Cross-Cultural Investigation of Social and Caregiving Environments in Infancy Among Hunter-Gatherers, Horticulturalists, and Agro-Pastoralists*

Authors: Courtney L. Meehan and Courtney Helfrecht

(3) *Good Stories Make Good Neighbours: How Ecology May Explain Cross-Cultural Prevalence of Stranger Avoidance and Conflict Folktales*

Author: Eleanor Fleming

3:15PM – 4:45PM

Panel Discussion

Petoskey

Learning about Psychological Resilience and International Research Helps Teachers of Immigrant and Refugee Students

Chair: Deborah A. Stiles

CONFERENCE SCHEDULE
FRIDAY, FEBRUARY 23, 2018

(1) An International, Cross-Cultural Perspective on the Importance of Psychological Resilience for High School and College Students Who Are Non-Native Speakers of English

Authors: Esa A. Alaraudanjoki, Deborah A. Stiles, Keary L. Ritchie, and Lisa R. Wilkinson

(2) High School Teachers Can Promote Social-Emotional Learning and Resilience in their Traumatized Immigrant and Refugee Students

Authors: Keary L. Ritchie, Deborah A. Stiles, Lisa R. Wilkinson, and Maria I. Escalona

(3) Instructors in Community Colleges Can Support Psychological Resilience and Build Community in their Traumatized Immigrant and Refugee Students

Authors: Lisa R. Wilkinson, Rika Yamaguchi, Keary L. Ritchie, and Deborah A. Stiles

3:15PM – 4:45PM

Conversation Hour

Dearborn

Women and Cross-Cultural Research – Where We’ve Been and Where We Are

Chairs: Carrie M. Brown and Brien K. Ashdown

Participants:

Judith L. Gibbons

Deborah L. Best

Alice E. Schlegel

Hemalatha Ganapathy-Coleman

Jill R. Brown

Bonnie Hewlett

3:15PM – 4:45PM

Paper Session

Lansing

Migration, Nationality, and Identity - Session Two

Chair: Sarah Almalki

(1) Exploring the Culture of Remembrance in St. Louis’ Bosnian Diaspora Community

Author: Ajlina Karamelic-Muratovic

(2) Home Is Where the Church Is? The Role of Religion in the Acculturation Process of Russian-Speaking Immigrants in Finland

Author: Liisa Tuhkanen

(3) Migration and Gender Ideology in Arab-American Families

Author: Sarah Almalki

(4) Cohabitation in Scandinavian and Asian countries: Heuveline and Timberlake's Typology

CONFERENCE SCHEDULE
FRIDAY, FEBRUARY 23, 2018

Author: Saif R. Farooqi

5:00PM – 6:00PM

Keynote Address

Detroit Ballroom

In Search of Justice: Applying Social Science Data to Indigenous Peoples' Rights in Southern Africa

Dr. Robert Hitchcock

Introduction by Dr. Jill Brown

6:00PM – 7:00PM

Cocktail reception
(Cash Bar)

Traverse City Patio (Detroit Ballroom)

7:00PM – 9:00PM

Banquet Dinner

Detroit Ballroom

Presidential Address

Detroit Ballroom

Dr. Jill Brown, SCCR President

CONFERENCE SCHEDULE
SATURDAY, FEBRUARY 24, 2018

TIME	EVENT	ROOM
8:00AM – 8:45AM	SCCR Board Meeting	Lansing
9:00AM – 5:00PM	Book Exhibit	Grand Rapids
9:00AM – 5:00PM	APA Div 52 Midwinter Board Meeting	Birmingham

SESSION I: 10:15AM – 11:45AM

10:15AM – 11:45AM	Workshop	Lansing
	Workshop: Exploring Cultural Variation Using eHRAF World Cultures Chair: Carol Ember	
10:15AM – 11:45AM	Organized Symposia	Dearborn
	Cultural Phenomena, Popular Culture, Media Representations, and Cultural Implications in Korea Chair: Seon-Gi Baek	
	(1) <i>Migrant Workers, Media Representations, Racial Discriminations, and Cross-Cultural Implications in Korean Society: A Longitudinal National Project</i> Author: Seon-Gi Baek	
	(2) <i>Changes of societal and cultural meanings for a public square: A Case study on the Candlelight Protest in the Gwanghwamun Square, Korea</i> Authors: Jeong-ah Yoon and Seon-Gi Baek	
	(3) <i>History, Popular Culture, Media Representations, and Societal and Cultural Implications: A Semiotic Analysis on "The Secret Door", a TV drama, and "The Throne", a Film</i> Authors: Dakyung Choo and Seon-Gi Baek	
	(4) <i>Misogyny, Female Supremacy, Rapid Change of Relations Between Men and Women, and Cultural Implications in Korean Society: A Semiotic and Discourse Analysis on "Strong Women, Do Bong-soon", a Korean TV drama</i> Authors: Wooju Lee, Seon-Gi Baek, and Jinok Mun	
10:15AM – 11:45AM	Paper Session	Petoskey
	Market Integration, Ethnic Identity, and Acculturation Chair: Mary Arneaud	

CONFERENCE SCHEDULE
SATURDAY, FEBRUARY 24, 2018

(1) *Ethnic Identity and Psycho-social Wellbeing in Trinidad and Fiji*
 Authors: Mary J. Arneaud and Nicole Alea

(2) *Market Integration, Cognitive Awareness, and the Expansion of Moral Empathy: Modern Life In Chinese Society*
 Author: William Jankowiak

(3) *Exploring Conceptions of 'Quality of Life' in Rural Ethnic Minorities*
 Authors: Sarah Taylor, Aileen Garcia, Maria Rosario T. De Guzman, Rodrigo Cantarero, Soo-Young Hong, Evan Choi, Yan Xia, and Grant Daily

(4) *Attitudes Towards Domestic Violence Across Three Generation of Vietnamese Americans*
 Author: Dung Ngo

10:15AM – 11:45AM

Paper Session

Saginaw

Approaches to Research: Methods, Education, and Community Perception

Chair: Car Mun Kok

(1) *Empowering Limited-Resource Families with Food Resource Management Knowledge and Skills: Why It Matters*
 Authors: Deepa Srivastava, Barbara MKNelly, and Angie Keihner

(2) *Understanding a Researcher's Interactions and Actions in Cross-Cultural Settings from a Culture Frame Switching Perspective*
 Author: Rebecca Bayeck

(3) *Community Perception and Coping Responses to the Effects of Landfills in Northwest Florida*
 Author: Samuel Jilo Dira

(4) *Merging Research and Practice: Program Adaptations to Serve Diverse Audiences in California 4-H Youth Development Program*
 Authors: Car Mun Kok and Claudia P. Diaz Carrasco

12:00PM – 1:00PM

SCCR General Membership Meeting

Chairs: Jill Brown and Alyssa Crittenden

Saginaw

SCCR 2018 PRE-REGISTERED PARTICIPANTS

LAST NAME	FIRST NAME	UNIVERSITY/ACADEMIC AFFILIATION	EMAIL ADDRESS
Adams	Glenn	University of Kansas	adams@ku.edu
Alaraudanjoki	Esa	Webster University	psykologipalvelut@alaraudanjoki.fi
Ali	Sumbleen	University of Connecticut	sumbleen.ali@uconn.edu
Almalki	Sarah	University of Missouri	sarah.almalki@mail.missouri.edu
Aloziem	Ozioma	University of Denver	Ozy.Aloziem@du.edu
Arens	Alyssa	Hope College	alyssa.aren@hope.edu
Arneaud	Mary	The University of the West Indies, Trinidad and Tobago	maryjearneaud@hotmail.com
Arnold	Laura	National Resource Center for Healthy Marriage and Families	info@healthymarriageandfamilies.org
Ashdown	Brien	Hobart & William Smith Colleges	ashdown@hws.edu
Baek	Seon-Gi	Sungkyunkwan University, South Korea	baek0399@gmail.com
Bard	Kim	University of Portsmouth, United Kingdom	kim.bard@port.ac.uk
Barry	Herbert	University of Pittsburgh	barrth@pitt.edu
Bartholomew	Ted	Purdue University	tbartho@purdue.edu
Benyshek	Daniel	University of Nevada, Las Vegas	daniel.benyshek@unlv.edu
Best	Deborah	Wake Forest University	best@wfu.edu
Bickel	Taylor	Creighton University	TEB54001@creighton.edu
Boyette	Adam	Duke University	ahboyette@gmail.com
Brown	Jill	Creighton University	jillbrown@creighton.edu
Brown	Carrie	Western Governors University	carrie.brown@wgu.edu
Bullock	Merry	American Psychological Association	merrybullock@mac.com
Capobianco	Nicole	Wake Forest University	caponb12@wfu.edu
Cashdan	Elizabeth	University of Utah	ecashdan@gmail.com
Cava Tadik	Yasemin	University of Georgia	yasemincava@gmail.com
Choo	Dakyung	Sungkyunkwan University, South Korea	uchoni89@gmail.com
Clinton	Amanda	American Psychological Association	aclinton@apa.org
Codding	Brian	University of Utah	brian.codding@anthro.utah.edu
Craig	Lyndsey	University of Nevada, Las Vegas	craig1@unlv.nevada.edu
Crisp	Courtney	Pepperdine University	courtney.crisp@pepperdine.edu
Crittenden	Alyssa	University of Nevada, Las Vegas	alyssa.crittenden@unlv.edu
de Guzman	Maria	University of Nebraska, Lincoln	mguzman2@unl.edu
Diaz Carrasco	Claudia	University of California, Division of Agriculture & Natural Resources	cpdiaz@ucanr.edu
Dira	Samuel	University of West Florida	sdira@uwf.edu
Duncan	Melissa	Pepperdine University	mduncan3@pepperdine.edu
Edman	Jeanne	Cosumnes River College	edmanj@crc.losrios.edu
Ember	Carol	Human Relations Area Files, Yale University	carol.ember@yale.edu
Esterach	Jan	University of Nebraska, Lincoln	jan.esterach@gmail.com
Farooqi	Saif	University of Delhi, India	saif.farooqi@gmail.com
Fleming	Eleanor	University of Durham	eleanor.j.fleming@durham.ac.uk
Foster	Hokulea	Creighton University	hkf33305@creighton.edu
Garcia	Aileen	University of Nebraska, Lincoln	aileen.garcia@huskers.unl.edu
Garcia	Sarah	Texas A&M University, Kingsville	sarah.a.garcia@students.tamuk.edu
Garcia	Francheska	Texas A&M University, Kingsville	gfrancheska6@gmail.com
Gibbons	Judith	Saint Louis University	judith.gibbons@slu.edu
Gray	Peter	University of Nevada, Las Vegas	peter.gray@unlv.edu
Green	Joyce	Chicago School of Professional Psychology	jyg6855@ego.thechicagoschool.edu
Hannon	Erin	University of Nevada, Las Vegas	erin.hannon@unlv.edu
Hartgrove-Freile	Janice	Lone Star College, North Harris	Janice.Hartgrove-Freile@lonestar.edu
Henry	Hani	American University in Cairo, Egypt	Hhenry@aucegypt.edu
Herlosky	Kristen	University of Nevada, Las Vegas	herlosk4@unlv.nevada.edu
Hewlett	Bonnie	Washington State University	hewlett@wsu.edu
Hitchcock	Robert	University of New Mexico	rkhitchcock@gmail.com
Holleck	Maike	Texas A&M University, Kingsville	maikeho@outlook.com
Hossain	Ziarat	University of New Mexico	zhossain@unm.edu
Huyck	Emily	Independent Scholar	emhuyck@gmail.com
Jakubiec	Marek	Jagiellonian University, Poland	marek.m.jakubiec@gmail.com
Jankowiak	William	University of Nevada, Las Vegas	william.jankowiak@unlv.edu
Jones	Eric	The University of Texas, Health Science Center at Houston	eric.c.jones@uth.tmc.edu
Kaboli-Nejad	Sahra	University of Nebraska, Omaha	skabolinejad@unomaha.edu
Kalinowski	Jon	Minnesota State University, Mankato	jon.kalinowski@mnsu.edu
Karamehic-Muratovic	Ajlina	Saint Louis University	ajlina.karamehicmuratovic@slu.edu
Kilgarin	Olivia	Creighton University	oliviakilgarin@creighton.edu
Kim	Joohyun	New York University	jk5472@nyu.edu
Kok	Car Mun	University of California Agriculture and Natural Resources	cmkok@ucanr.edu
Kramer	Karen	University of Utah	karen.kramer@anthro.utah.edu
Krawczyk	Rosemary	Minnesota State University, Mankato	rosemary.krawczyk@mnsu.edu

Krayrouz	Rony	Psychodos	info@psychodos.com.au
Lancy	David	Utah State University	david.lancy@usu.edu
Lane	Avery	Washington State University	avery.lane@wsu.edu
LAST NAME	FIRST NAME	UNIVERSITY/ACADEMIC AFFILIATION	EMAIL ADDRESS
Leidman	Mary Beth	Indiana University of Pennsylvania	mbleid@iup.edu
Lew-Levy	Sheina	University of Cambridge	sheinalewlevy@gmail.com
Liu	Chu-Li	Tunghai University, Taiwan	chuli@thu.edu.tw
Luera	Patricia	Texas A&M University, Kingsville	pluera7@yahoo.com
Maciaszek	Patrycja	Pedagogical University of Krakow, Poland	patricia.maciaszek@gmail.com
Maiya	Sahitya	University of Missouri, Columbia	smq23@mail.missouri.edu
Martin	Debra	University of Nevada, Las Vegas	debra.martin@unlv.edu
McHale	Timothy	University of Nevada, Las Vegas	mchalet2@unlv.nevada.edu
Meehan	Courtney	Washington State University	cmeehan@wsu.edu
Memmott-Elison	Madison	University of Missouri	madimemmott@gmail.com
Metz	Jennifer	California State University, Maritime	jmetz@csum.edu
Mitran	Andreea	National Resource Center for Healthy Marriage and Families	info@healthymarriageandfamilies.org
Monysakada	Phal	University of Georgia	monysakada.phal@uga.edu
Mun	Jinok	Sungkyunkwan University, South Korea	mc_okok@naver.com
Nesteruk	Olena	Montclair State University	nesteruko@mail.montclair.edu
Ngo	Paul	St. Norbert College	paul.ngo@snc.edu
Ngo	Dung	Texas A&M University	hotruongquan6706@gmail.com
Nowlan	Andrew	Kwansei Gakuin University, Japan	nowlan1979@gmail.com
Oblad	Timothy	Texas A&M University, Kingsville	timothy.oblad@tamuk.edu
Osterholtz	Anna	Mississippi State University	aosterholtz@anthro.msstate.edu
Padasas	Irene	University of Nebraska, Lincoln	ipadasas@huskers.unl.edu
Peregrine	Peter	Lawrence University	peter.n.peregrine@lawrence.edu
Pierotti	Sarah	University of Missouri	slpfk2@mail.missouri.edu
Poelker	Katelyn	Hope College	poelker@hope.edu
Pollom	Trevor	University of Nevada, Las Vegas	pollomt@unlv.nevada.edu
Puzio	Angelica	New York University	angelicapuzio@gmail.com
Qin	Mengxue	Shanghai New York University, China	mq392@nyu.edu
Rae-Espinoza	Heather	California State University, Long Beach	hre@csulb.edu
Ralston	Claire	University of Nevada, Las Vegas	ralstc1@unlv.nevada.edu
Ritchie	Keary	Webster University	Kearyritchie08@webster.edu
Rohner	Ronald	University of Connecticut	r.rohner@uconn.edu
Rohner	Nancy	University of Connecticut	r.rohner@uconn.edu
Roulette	Casey	San Diego State University	croulette@sdsu.edu
Saucier	Gerard	University of Oregon	gsaucier@uoregon.edu
Schlegel	Alice	University of Arizona	schlegel@email.arizona.edu
Shealy	Craig	James Madison University	craigshealy@gmail.com
Simpson	Diana	University of Nevada, Las Vegas	simpsd4@unlv.nevada.edu
Sorrell	James	University of Nebraska	james.sorrell@nebraska.gov
Srivastava	Deepa	University of California Cooperative Extension	dsr@ucdavis.edu
Staton	Renee	James Madison University	statonar@jmu.edu
Sternberger	Lee	James Madison University	sternblg@jmu.edu
Stiles	Deborah	Webster University	stilesda@webster.edu
Taylor	Sarah	University of Nebraska, Lincoln	sarah.taylor@huskers.unl.edu
Torres	Cesar	Creighton University	CAT24151@Creighton.edu
Tulviste	Tiia	University of Tartu, Estonia	Tiia.Tulviste@ut.ee
Volsche	Shelly	University of Nevada, Las Vegas	shelly.volsche@unlv.edu
Waithaka	Abel	Youngstown State University	agwaithaka@ysu.edu
Wang	Dan	University of Nebraska, Lincoln	dan.wang@huskers.unl.edu
Wilkinson	Lisa	Webster University	lwilkinson@stlcc.edu
Winterberg	Steve	George Fox University	swinterberg@georgefox.edu
Yang	Rui	New York University	rui.yang@nyu.edu
Yoder	Carol	Trinity University	cyoder@trinity.edu
Yoon	Jeong-ah	Sungkyunkwan University, South Korea	jayjayoon@naver.com
Zhuo	Ke	New York University Shanghai, China	kz639@nyu.edu

JACKSONVILLE



Join us next year for the 48th
Annual Meeting of The Society
for Cross-Cultural Research

FEBRUARY 13-16, 2019

Omni Jacksonville Hotel 245 Water Street, Jacksonville, Florida 32202

SCCR Membership



Society for Cross-Cultural Research

To join the Society for Cross-Cultural Research, please visit our website at www.sccr.org and submit the online application form and pay your dues online or print and fill out a form and mail it to the Treasurer along with your dues payment.

Membership in SCCR begins after your payment has been received, and will continue for one or two years, depending on the selection you make. After becoming an SCCR member, you will begin receiving the current issues of *Cross-Cultural Research*. Back issues of the journal are available online only.

There are three categories of membership in SCCR. Regular, Student, and Retired members receive *Cross-Cultural Research*, the *Newsletter*, 20% publisher discounts from Sage Publications and Information Age Publishing, reduced meeting registration rates, and voting privileges. Joint members share one copy of *CCR*. You may choose an alternate two-year dues payment option at a reduced rate.

	One Year		Two Years	
Type	Single	Joint	Single	Joint
Regular	\$65	\$75	\$115	\$135
Retired	\$45	\$55	\$80	\$100
Student	\$35	\$45	\$65	\$85

Amounts are in U.S. dollars.

SCCR ANNUAL AWARDS

SCCR Leigh Minturn Memorial Award for Early Career Cross-Cultural Research

A. Leigh Minturn (1928 – 1999) was Professor Emerita of Social Psychology at the University of Colorado, and a past president of SCCR. The obituary of Dr. Minturn written by William Lambert (following her untimely death in the Egypt Air plane crash tragedy) described her as "...a strong presence, bordering on the aristocratic, knitting through a scientific meeting and facing questions with characteristic vigor and courage, drawing upon immense knowledge from cross-cultural lore and generalizations, to systematic, well-planned research findings and the growing cross-cultural data from experiments." She was a long-term leader of SCCR and bequeathed an endowment to SCCR that will make possible web site renovation and many other growth initiatives. Leigh Minturn mentored many cross-cultural scholars and will have a permanent impact on SCCR. This award honors her memory and legacy.



Annual Award

- \$300 prize
- Free membership in SCCR for 1 year
- Free registration and banquet fees at one SCCR conference
- Certificate of Award

Eligibility

- Has not been awarded tenure at any university, and
- Not more than 5 years since date of receipt of terminal degree (at time of nomination)

Criteria

- Outstanding culture-related scholarly productivity
- Outstanding culture-related scholarly potential
- Active contributor to SCCR
- Past attendee of at least 2 SCCR conferences

Award Committee

- Chaired by SCCR President
- 2 other Committee members, appointed by SCCR President (from at least 2 different disciplines)
- Committee members are recused from voting for nominees with whom they have a clear conflict of interest (personal/professional relationship with nominee)
- Award Committee membership changes each year

Nominations Process

- Self-nominations, nominations by Award Committee members or by dues-paying SCCR members
- Application letter, CV, and supporting letters/materials all sent electronically to SCCR President
- Nominations and application materials due by September 20
- Award announced by November 20
- Award must be received in person at conference

SCCR ANNUAL AWARDS



SCCR Judith L. Gibbons Award for Research on Culture and Gender

The SCCR Judith L. Gibbons Award for Research in Culture and Gender is in honor of long time SCCR member Dr. Judith L. Gibbons, Professor Emerita of Psychology at Saint Louis University. Dr. Gibbons has mentored many students and early career academics, and her contributions will have a permanent impact on SCCR.

Annual Award

- \$200 prize
- Free membership in SCCR for 1 year
- Free registration and banquet fees at one SCCR conference
- Award plaque

Eligibility

- Graduate student or early career professional (within 7 years of receiving their PhD)
- Presenting research on culture and gender at annual SCCR conference

Award Committee

- Chaired by SCCR members Brien Ashdown and Carrie Brown
- 2 other Committee members, appointed by Brien Ashdown and Carrie Brown (this may change every year)
- Committee members are recused from voting for nominees with whom they have a clear conflict of interest (personal/professional relationship with nominee)

Award Process

- When submitting an abstract for the SCCR meeting, submitters will have the option to indicate if they would like to be considered for the award
- Award will be announced at the SCCR conference
- Award must be received in person at conference

SCCR ANNUAL AWARDS

SCCR John & Beatrice Whiting Memorial Award for Outstanding Student in Cross-Cultural Studies



John Wesley Mayhew Whiting (1908 – 1999) was Professor of Social Anthropology Emeritus at Harvard University. Beatrice Blyth Whiting (1914 – 2003) was Professor Emerita of Education at the Harvard Graduate School of Education. Both were major figures in the creation of SCCR ([link here to article about SCCR's founding](#)) and Beatrice Whiting was SCCR's first president. Both were pioneers in the areas of psychological anthropology and studies in child development. Their marriage of over 60 years and legendary research partnership inspires all academic couples, and their mentoring of generations of internationally-minded students and researchers left a permanent imprint on our field. This annual award respectfully honors their legacy and memory.

Annual Award

- \$150 prize
- Free student membership in SCCR for 2 years
- Free registration and banquet fees for one SCCR conference
- Certificate of award

Eligibility

- Graduate student conducting culture-related research

Criteria

- Outstanding culture-related scholarly potential
- Outstanding culture-related scholarly productivity
- Active contributor to SCCR
- Past attendee of at least 1 SCCR conference

Award Committee

- Chaired by SCCR President
- 2 other Committee members, appointed by SCCR President (from 2 different disciplines)
- Committee members are recused from voting for nominees with whom they have a clear conflict of interest (personal/professional relationship with nominee)
- Award Committee membership changes each year